

EVPOINT

EVPoint EV22 Plus SMART EV Charger

Powerful SMART charger with rich functionality



EVPoint EV22 Plus SMART EV Charger

Powerful SMART charger with rich functionality

The **EVPoint** charger range are smart AC chargers designed for residential and commercial installations (e.g., fleet buyers) that are available in single or three-phase options.

They come ready out of the box and support a variety of additional features, sockets with actuator locks or tethered charging cables. For security and safety, NFC authorization and built-in RCD type A with DC leakage fault protection features are included as standard on all models.

The chargers are designed with a robust enclosure made of recycled plastic (up to 100% post-industrial and post-consumer feedstock), providing protection from the weather conditions and accidental impact. Easy setup and maintenance are guaranteed by a modular front cover which enables servicing essential connections without exposing the entire unit.



PRODUCT HIGHLIGHTS

- Easy to install and service
- Multiple connectivity options
- Compact and modular design allows for separate power/data connections
- NFC-compatible access control
- Full control with the Smart App (via local Wi-Fi)
- BLE functionality (Wi-Fi access point provisioning function via mobile app)
- Integrated Type A 30mA RCD with 6mA DC protection
- Available as tethered or untethered (socketed) models
- Compliant with the Regulations 2021 and includes the charging times and randomized delayed start (RDS)

FEATURES AND SPECIFICATIONS

Smart and efficient charging

The **EVPoint** charger series belongs to a class of EVSE called smart chargers, because its entire functionality can be controlled remotely and automatically. This is enabled by the OCPP 1.6J protocol support embedded in the charger. This is a universally accepted control protocol for charging stations, meaning that any OCPP-based server can talk to, control, and remotely update the charger, independent of service provider and other factors.



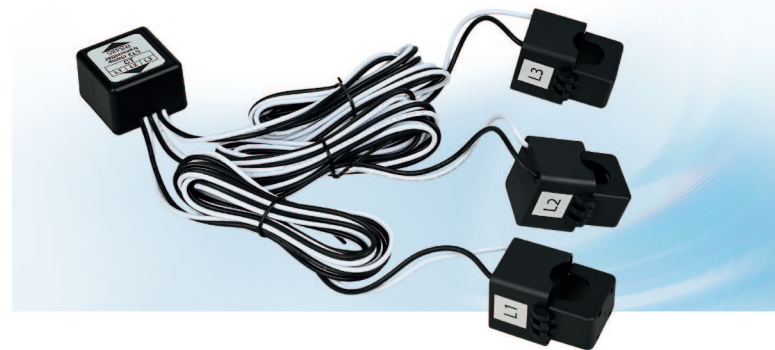


The main benefits of smart charging are the ease of use and flexibility it offers, because it enables the user to control the time, duration, and amount of charging that is delivered to their EVs. In locations where electricity rates are variable throughout the day, this translates into substantial energy bills savings, as the charger can be configured to take advantage of lower energy prices during off-peak periods. Additionally, the charger has been designed to function with home solar installations. Thus, it can be set to provide charging only when excess energy is being generated, providing a very efficient utilization of energy resources. Smart charging also enables multiple chargers in a location to communicate with each other, and best utilize the available power to optimally charge several EVs.

The charger requires an internet connection to execute its smart functions. It can be configured to support a primary and secondary network interface for redundancy. For example, it can maintain a wireless network connection, but fall back to GSM in case of poor connectivity or router failure. If no network connection can be established, the charger is capable of operating in a configurable "offline plug-in charge" mode, whereby it works as a simple EVSE, providing the maximum permissible charging power when an EV is connected.

The **EVPoint** charger are fully configurable via a web interface client, which is accessible from any Wi-Fi-enabled device. An integrated BLE interface permits the user to provision the wireless access by setting the SSID and password from the mobile app.

- 1-Phase or 3-Phase operation (7.4kW - 22kW)
- 230VAC, 50 Hz, 1-Phase to 3 x 230 / 400VAC, 50 Hz, 3-Phase
- Power Level Control from 6A to 32A (software control)
- RCD Type A (30mA)/ DC (6mA), IEC 61008-1 compliant
- Undervoltage and Overvoltage protections
- Reverse phase or phase-to-phase protection
- CE (IEC 61851-1, IEC 61851-2, IEC 60950-1, IEC 60950-22)
- Ethernet, 4G and WLAN Connectivity
- OCPP 1.6 JSON Protocol
- Integrated NFC reader, 13.56 MHz, MIFARE compatible
- External current monitoring via dedicated CT clamp device
- Type 2 socket with automatic electromechanical lock and Tethered options
- IP54 and IK08 ratings
- Extended warranty option



CT clamp: Current Transformer, an electrical device for non-contact measurement of current in a conductor. CT clamps are intended to be installed on the current-carrying live conductors ahead of the MCB. They monitor the total installation power (e.g., of an entire house or parking lot) and relay the values to the charger unit, which can then regulate its output power to prevent the MCB from tripping.


The charger is designed with multiple safety interlocks in order to prevent the hazards associated with high-current, high-power devices, such as electrical shocks, fires, and equipment damage. It monitors the state of the electrical network, and using a CT clamp, can monitor total installation consumption. The charger has a built-in AC/DC RCD, and will prevent leakage currents from causing damage to people and devices. The charger utilizes both sound and light signaling to report its state and possible faults, enabling the quick and safe detection of problems.





Powerful SMART charger with rich functionality

EVPoint

Tintyava Str. 15-17, Newton Technicenter building, 1113 Sofia
+359 889 599 207 | +359 887 500 585 | +359 885 700 860
e-mail: info@evpoint.bg

@evpoint.bg 

@evpoint.bg 

EVPoint 

www.evpoint.bg